

DOLPHIN

TLIF CAGE SYSTEM





★ Implants ★

0° angle | 10 x 25 mm

Heights	PEEK Implants	Titanium Implants
7 mm	1660 - 2507	2030 - 2507
8 mm	1660 - 2508	2030 - 2508
9 mm	1660 - 2509	2030 - 2509
10 mm	1660 - 2510	2030 - 2510
11 mm	1660 - 2511	2030 - 2511
12 mm	1660 - 2512	2030 - 2512
13 mm	1660 - 2513	2030 - 2513
14 mm	1660 - 2514	2030 - 2514

0° angle | 10 x 28 mm

Optional

Heights	PEEK Implants	Titanium Implants
7 mm	1660 - 2807	2030 - 2807
8 mm	1660 - 2808	2030 - 2808
9 mm	1660 - 2809	2030 - 2809
10 mm	1660 - 2810	2030 - 2810
11 mm	1660 - 2811	2030 - 2811
12 mm	1660 - 2812	2030 - 2812
13 mm	1660 - 2813	2030 - 2813
14 mm	1660 - 2814	2030 - 2814

0° angle | 10 x 30 mm

Heights	PEEK Implants	Titanium Implants
7 mm	1660 - 3007	2030 - 3007
8 mm	1660 - 3008	2030 - 3008
9 mm	1660 - 3009	2030 - 3009
10 mm	1660 - 3010	2030 - 3010
11 mm	1660 - 3011	2030 - 3011
12 mm	1660 - 3012	2030 - 3012
13 mm	1660 - 3013	2030 - 3013
14 mm	1660 - 3014	2030 - 3014

0° angle | 10 x 32 mm

Optional

Heights	PEEK Implants	Titanium Implants
8 mm	1660 - 3208	2030 - 3208
9 mm	1660 - 3209	2030 - 3209
10 mm	1660 - 3210	2030 - 3210
11 mm	1660 - 3211	2030 - 3211
12 mm	1660 - 3212	2030 - 3212
13 mm	1660 - 3213	2030 - 3213
14 mm	1660 - 3214	2030 - 3214

0° angle | **10 x 36 mm** Optional

Heights	PEEK Implants	Titanium Implants
8 mm	1660 - 3608	2030 - 3608
9 mm	1660 - 3609	2030 - 3609
10 mm	1660 - 3610	2030 - 3610
11 mm	1660 - 3611	2030 - 3611
12 mm	1660 - 3612	2030 - 3612
13 mm	1660 - 3613	2030 - 3613
14 mm	1660 - 3614	2030 - 3614

4° angle | **10 x 25 mm**

Heights	PEEK Implants	Titanium Implants
8 mm	1661 - 2508	2031 - 2508
9 mm	1661 - 2509	2031 - 2509
10 mm	1661 - 2510	2031 - 2510
11 mm	1661 - 2511	2031 - 2511
12 mm	1661 - 2512	2031 - 2512
13 mm	1661 - 2513	2031 - 2513
14 mm	1661 - 2514	2031 - 2514

4° angle | **10 x 28 mm** Optional

Heights	PEEK Implants	Titanium Implants
8 mm	1661 - 2808	2031 - 2808
9 mm	1661 - 2809	2031 - 2809
10 mm	1661 - 2810	2031 - 2810
11 mm	1661 - 2811	2031 - 2811
12 mm	1661 - 2812	2031 - 2812
13 mm	1661 - 2813	2031 - 2813
14 mm	1661 - 2814	2031 - 2814

4° angle | **10 x 30 mm**

Heights	PEEK Implants	Titanium Implants
8 mm	1661 - 3008	2031 - 3008
9 mm	1661 - 3009	2031 - 3009
10 mm	1661 - 3010	2031 - 3010
11 mm	1661 - 3011	2031 - 3011
12 mm	1661 - 3012	2031 - 3012
13 mm	1661 - 3013	2031 - 3013
14 mm	1661 - 3014	2031 - 3014

4° angle | **10 x 32 mm** Optional

Heights	PEEK Implants	Titanium Implants
8 mm	1661 - 3208	2031 - 3208
9 mm	1661 - 3209	2031 - 3209
10 mm	1661 - 3210	2031 - 3210
11 mm	1661 - 3211	2031 - 3211
12 mm	1661 - 3212	2031 - 3212
13 mm	1661 - 3213	2031 - 3213
14 mm	1661 - 3214	2031 - 3214

4° angle | **10 x 36 mm** Optional

Heights	PEEK Implants	Titanium Implants
8 mm	1661 - 3608	2031 - 3608
9 mm	1661 - 3609	2031 - 3609
10 mm	1661 - 3610	2031 - 3610
11 mm	1661 - 3611	2031 - 3611
12 mm	1661 - 3612	2031 - 3612
13 mm	1661 - 3613	2031 - 3613
14 mm	1661 - 3614	2031 - 3614

8° angle | **10 x 25 mm**

Heights	PEEK Implants	Titanium Implants
8 mm	1662 - 2508	2032 - 2508
9 mm	1662 - 2509	2032 - 2509
10 mm	1662 - 2510	2032 - 2510
11 mm	1662 - 2511	2032 - 2511
12 mm	1662 - 2512	2032 - 2512
13 mm	1662 - 2513	2032 - 2513
14 mm	1662 - 2514	2032 - 2514

8° angle | **10 x 28 mm**

Optional

Heights	PEEK Implants	Titanium Implants
8 mm	1662 - 2808	2032 - 2808
9 mm	1662 - 2809	2032 - 2809
10 mm	1662 - 2810	2032 - 2810
11 mm	1662 - 2811	2032 - 2811
12 mm	1662 - 2812	2032 - 2812
13 mm	1662 - 2813	2032 - 2813
14 mm	1662 - 2814	2032 - 2814

8° angle | **10 x 30 mm**

Heights	PEEK Implants	Titanium Implants
8 mm	1662 - 3008	2032 - 3008
9 mm	1662 - 3009	2032 - 3009
10 mm	1662 - 3010	2032 - 3010
11 mm	1662 - 3011	2032 - 3011
12 mm	1662 - 3012	2032 - 3012
13 mm	1662 - 3013	2032 - 3013
14 mm	1662 - 3014	2032 - 3014

8° angle | **10 x 32 mm**

Optional

Heights	PEEK Implants	Titanium Implants
8 mm	1662 - 3208	2032 - 3208
9 mm	1662 - 3209	2032 - 3209
10 mm	1662 - 3210	2032 - 3210
11 mm	1662 - 3211	2032 - 3211
12 mm	1662 - 3212	2032 - 3212
13 mm	1662 - 3213	2032 - 3213
14 mm	1662 - 3214	2032 - 3214

8° angle | **10 x 36 mm**

Optional

Heights	PEEK Implants	Titanium Implants
8 mm	1662 - 3608	2032 - 3608
9 mm	1662 - 3609	2032 - 3609
10 mm	1662 - 3610	2032 - 3610
11 mm	1662 - 3611	2032 - 3611
12 mm	1662 - 3612	2032 - 3612
13 mm	1662 - 3613	2032 - 3613
14 mm	1662 - 3614	2032 - 3614

★ Instruments ★

- 0105 - 0214
TLIF Cage Holder



Trial | 0° angle

10 x 25 mm

25 x 7 mm	0105 - 0765
-----------	-------------

25 x 8 mm	0105 - 0766
-----------	-------------

25 x 9 mm	0105 - 0767
-----------	-------------

25 x 10 mm	0105 - 0768
------------	-------------

25 x 11 mm	0105 - 0769
------------	-------------

25 x 12 mm	0105 - 0770
------------	-------------

25 x 13 mm	0105 - 0771
------------	-------------

25 x 14 mm	0105 - 0772
------------	-------------

10 x 30 mm

30 x 7 mm	0105 - 0781
-----------	-------------

30 x 8 mm	0105 - 0782
-----------	-------------

30 x 9 mm	0105 - 0783
-----------	-------------

30 x 10 mm	0105 - 0784
------------	-------------

30 x 11 mm	0105 - 0785
------------	-------------

30 x 12 mm	0105 - 0786
------------	-------------

30 x 13 mm	0105 - 0787
------------	-------------

30 x 14 mm	0105 - 0788
------------	-------------

10 x 28 mm

28 x 7 mm	0105 - 0773
-----------	-------------

28 x 8 mm	0105 - 0774
-----------	-------------

28 x 9 mm	0105 - 0775
-----------	-------------

28 x 10 mm	0105 - 0776
------------	-------------

28 x 11 mm	0105 - 0777
------------	-------------

28 x 12 mm	0105 - 0778
------------	-------------

28 x 13 mm	0105 - 0779
------------	-------------

28 x 14 mm	0105 - 0780
------------	-------------

10 x 32 mm

25 x 7 mm	0105 - 0789
-----------	-------------

25 x 8 mm	0105 - 0790
-----------	-------------

25 x 9 mm	0105 - 0791
-----------	-------------

25 x 10 mm	0105 - 0792
------------	-------------

25 x 11 mm	0105 - 0793
------------	-------------

25 x 12 mm	0105 - 0794
------------	-------------

25 x 13 mm	0105 - 0795
------------	-------------

25 x 14 mm	0105 - 0796
------------	-------------

10 x 36 mm

28 x 7 mm	0105 - 0797
-----------	-------------

28 x 8 mm	0105 - 0798
-----------	-------------

28 x 9 mm	0105 - 0799
-----------	-------------

28 x 10 mm	0105 - 0800
------------	-------------

28 x 11 mm	0105 - 0801
------------	-------------

28 x 12 mm	0105 - 0802
------------	-------------

28 x 13 mm	0105 - 0803
------------	-------------

28 x 14 mm	0105 - 0804
------------	-------------



Trial | 4° angle

10 x 25 mm

25 x 7 mm	0105 - 0805
-----------	-------------

25 x 8 mm	0105 - 0806
-----------	-------------

25 x 9 mm	0105 - 0807
-----------	-------------

25 x 12 mm	0105 - 0808
------------	-------------

25 x 10 mm	0105 - 0809
------------	-------------

25 x 11 mm	0105 - 0810
------------	-------------

25 x 13 mm	0105 - 0811
------------	-------------

25 x 14 mm	0105 - 0812
------------	-------------

10 x 28 mm

25 x 7 mm 0105 - 0813

25 x 8 mm 0105 - 0814

25 x 9 mm 0105 - 0815

25 x 10 mm 0105 - 0816

25 x 11 mm 0105 - 0817

25 x 12 mm 0105 - 0818

25 x 13 mm 0105 - 0819

25 x 14 mm 0105 - 0820

10 x 30 mm

28 x 7 mm 0105 - 0821

28 x 8 mm 0105 - 0822

28 x 9 mm 0105 - 0823

28 x 10 mm 0105 - 0824

28 x 11 mm 0105 - 0825

28 x 12 mm 0105 - 0826

28 x 13 mm 0105 - 0827

28 x 14 mm 0105 - 0828

10 x 32 mm

30 x 7 mm 0105 - 0829

30 x 8 mm 0105 - 0830

30 x 9 mm 0105 - 0831

30 x 10 mm 0105 - 0832

30 x 11 mm 0105 - 0833

30 x 12 mm 0105 - 0834

30 x 13 mm 0105 - 0835

30 x 14 mm 0105 - 0836

10 x 36 mm

25 x 7 mm 0105 - 0837

25 x 8 mm 0105 - 0838

25 x 9 mm 0105 - 0839

25 x 12 mm 0105 - 0840

25 x 10 mm 0105 - 0841

25 x 11 mm 0105 - 0842

25 x 13 mm 0105 - 0843

25 x 14 mm 0105 - 0844

Trial | 8° angle**10 x 25 mm**

25 x 7 mm 0105 - 0845

25 x 8 mm 0105 - 0846

25 x 9 mm 0105 - 0847

25 x 10 mm 0105 - 0848

25 x 11 mm 0105 - 0849

25 x 12 mm 0105 - 0850

25 x 13 mm 0105 - 0851

25 x 14 mm 0105 - 0852

10 x 28 mm

28 x 7 mm 0105 - 0853

28 x 8 mm 0105 - 0854

28 x 9 mm 0105 - 0855

28 x 10 mm 0105 - 0856

28 x 11 mm 0105 - 0857

28 x 12 mm 0105 - 0858

28 x 13 mm 0105 - 0859

28 x 14 mm 0105 - 0860

10 x 30 mm

30 x 7 mm 0105 - 0861

30 x 8 mm 0105 - 0862

30 x 9 mm 0105 - 0863

30 x 10 mm 0105 - 0864

30 x 11 mm 0105 - 0865

30 x 12 mm 0105 - 0866

30 x 13 mm 0105 - 0867

30 x 14 mm 0105 - 0868

10 x 32 mm

25 x 7 mm 0105 - 0869

25 x 8 mm 0105 - 0870

25 x 9 mm 0105 - 0871

25 x 10 mm 0105 - 0872

25 x 11 mm 0105 - 0873

25 x 12 mm 0105 - 0874

25 x 13 mm 0105 - 0875

25 x 14 mm 0105 - 0876

10 x 36 mm

28 x 7 mm 0105 - 0877

28 x 8 mm 0105 - 0878

28 x 9 mm 0105 - 0879

28 x 10 mm 0105 - 0880

28 x 11 mm 0105 - 0881

28 x 12 mm 0105 - 0882

28 x 13 mm 0105 - 0883

28 x 14 mm 0105 - 0884



Sharp Reamer

Ø7.0 mm	0105 - 0105
Ø8.0 mm	0105 - 0106
Ø9.0 mm	0105 - 0107
Ø10.0 mm	0105 - 0108
Ø11.0 mm	0105 - 0109
Ø12.0 mm	0105 - 0110
Ø13.0 mm	0105 - 0111
Ø14.0 mm	0105 - 0112



Blunt Reamer

Ø7.0 mm	0105 - 0123
Ø8.0 mm	0105 - 0124
Ø9.0 mm	0105 - 0125
Ø10.0 mm	0105 - 0126
Ø11.0 mm	0105 - 0127
Ø12.0 mm	0105 - 0128
Ø13.0 mm	0105 - 0129
Ø14.0 mm	0105 - 0130



- 0105-0220
T - Handle



- 0105-0233
Small Cup Curette, Right



- 0105-0234
Small Cup Curette, Left



- 0105-0132
Small Cup Curette, Straight



- 0105-0230
Osteotome, Right



- 0105-0231
Osteotome, Left



- 0105-0215
Funnel



- 0105-0136
Funnel Impactor



- 0105-0135
Graft Holder



- 0105-0134
Graft Impactor



- 0105-0213
Slide Hammer



Optional Instruments

- 0105-0212
Cage Pusher, Curved



- 0105-0208
Angle Rasp, Dual Sided



- 0105-0205
Rasp, Dual Sided



- 0105-0207
Ring Curette



- 0105 - 0134
Box Curette, Left



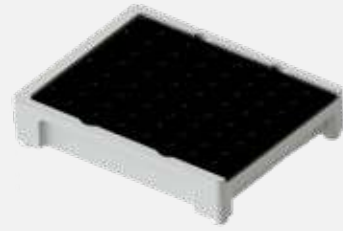
- 0105 - 0205
Box Curette, Right



- 0105 - 0207
Box Curette, Stright



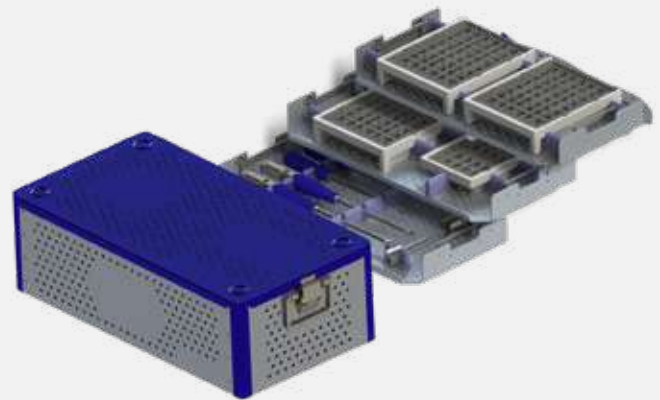
- 0105-0002
Implant Caddy



- 0105-0002
Cage Trial Caddy



- 0105-0003
Instrument Container





🌐 www.solco.co.in | ✉ sales@solco.co.in

Corporate Office

5 & 6, 3rd Floor, B.Jadav Chambers, Above Sales India,
Ashram Road, Ahmedabad-380009, India.

Plant

Survey No. 1540, Village-Rajpur, B/s. Torrent Pharma,
Ahmedabad-Mehsana Highway, Tal. Kadi,
Dist. Mehsana-382715, Gujarat, India.